

UPHOLSTERY
FABRIC
COLLECTION



DESIGN + PERFORMANCE™

DESIGN + PERFORMANCE™

SUNBRELLA® WAS FOUNDED ON THE BELIEF THAT TEXTILES SHOULD BE BOTH
FUNCTIONAL AND BEAUTIFUL.

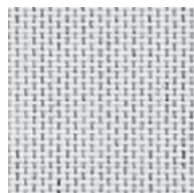
FEATURING **SOPHISTICATED** PATTERNS AND LUXURIOUS TEXTURES, SUNBRELLA®
FABRICS WILL CHALLENGE EXPECTATIONS AT EVERY TURN WITH **EXCEPTIONAL**
DESIGN THAT'S EQUALLED ONLY BY ITS LEGENDARY **PERFORMANCE**.
SUNBRELLA® FABRICS ARE NOT SIMPLY AT THE FOREFRONT OF STYLE, BUT AT
THE LEADING EDGE OF INNOVATION, INSPIRED BY THE **BOUNDLESS CREATIVITY**
AND LASTING IMPACT OF THE ART, FASHION AND **DESIGN** WORLDS■



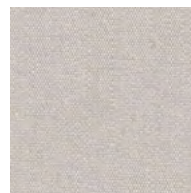
SUNBRELLA® SOLIDS & STRIPES



SJA 5404 137
NATURAL



SJA 3966 137
MARBLE



SJA 3741 137
SILVER GREY



SJA 3706 137
SHINGLES



SJA 3756 137
LEAD CHINÉ



SJA 3777 137
PORTO GREY CHINÉ

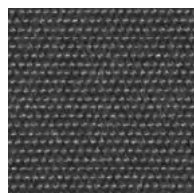
REPEAT/RAPPORT: 19,95cm



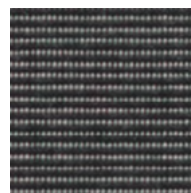
SJA 3757 137
FLANELLE



SJA 3737 137
ARDOISE



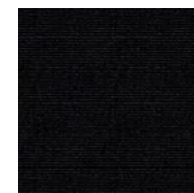
SJA 3906 137
CARBON



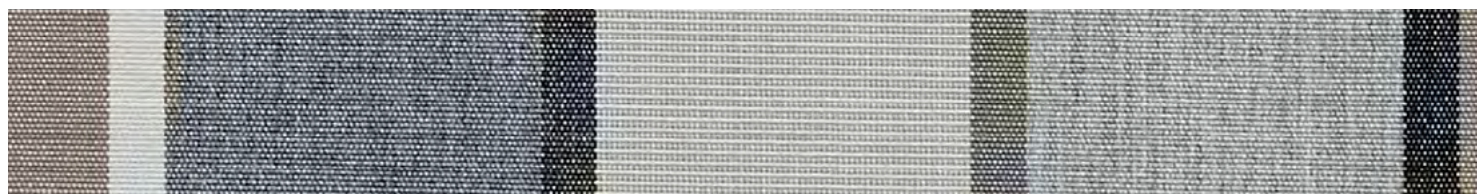
SJA 3705 137
CHARCOAL



SJA 3758 137
SOOTY



SJA 5408 137
BLACK



SJA 3778 137
QUADRI GREY

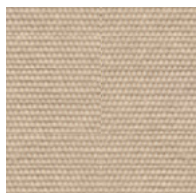
REPEAT/RAPPORT: 22,71cm



SJA 3974 137
SINTRA GREY

REPEAT/RAPPORT: 19,80cm

SUNBRELLA® SOLIDS & STRIPES



SJA 5422 137
ANTIQUÉ BEIGE



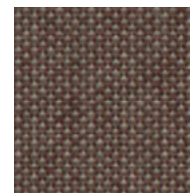
SJA 5476 137
HEATHER BEIGE



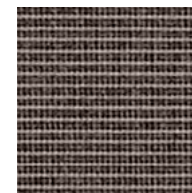
SJA 3907 137
TAUPE CHINÉ



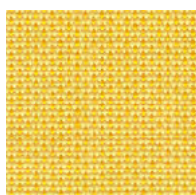
SJA 3729 137
TAUPE



SJA 3127 137
MINK BROWN



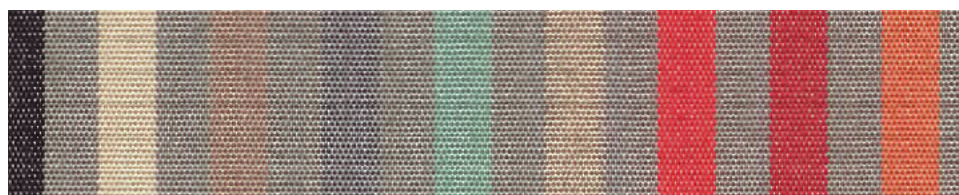
SJA 3792 137
DARK SMOKE



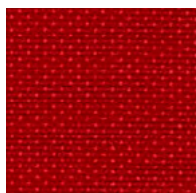
SJA 3937 137
LEMON



SJA 3938 137
MIMOSA



SJA 3954 137
CONFETTI RED | REPEAT/RAPPORT: 19,38cm



SJA 3968 137
PEPPER



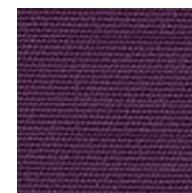
SJA 3728 137
PARIS RED



SJA 5436 137
BURGUNDY



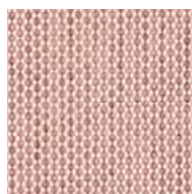
SJA 3905 137
PINK



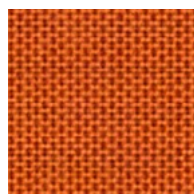
SJA 3718 137
PLUM



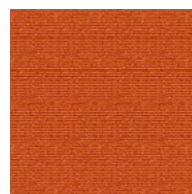
SJA 3962 137
PEACH



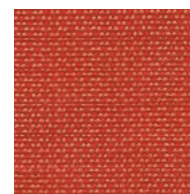
SJA 3965 137
BLUSH



SJA 3969 137
PUMPKIN



SJA 5417 137
TUSCANY



SJA 3939 137
PAPRIKA

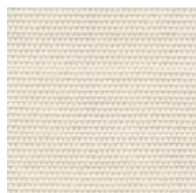


SJA 5477 137
LOGO RED

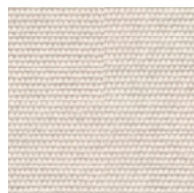


SJA 3971 137
FIGARI RED | REPEAT/RAPPORT: 27,73cm

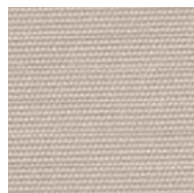
SUNBRELLA® SOLIDS & STRIPES



SJA 3943 137
NACRE



SJA 5453 137
CANVAS



SJA 3960 137
ARGILE



SJA 3780 137
LIN



SJA 48009 137
ARBOR PEBBLE



SJA 3975 137
SINTRA GREEN | REPEAT/RAPPORT: 19,80cm



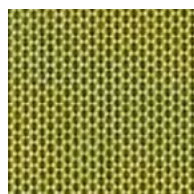
SJA 3956 137
CONFETTI YELLOW | REPEAT/RAPPORT: 19,38cm



SJA 3945 137
GRANNY



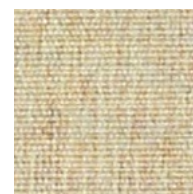
SJA 3738 137
MACAO



SJA 3970 137
LICHEN



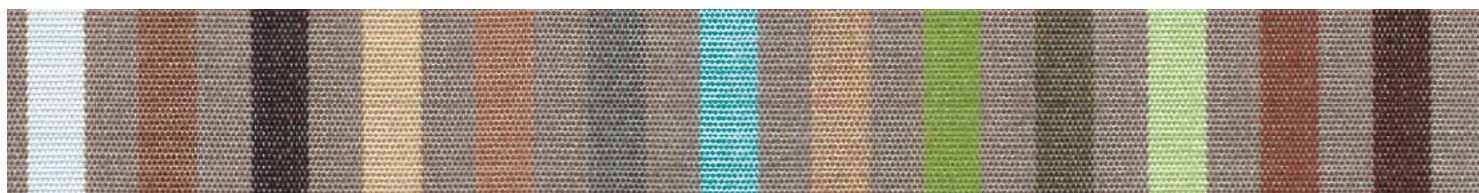
SJA 3967 137
MINT



SJA 3963 137
EGGSHELL

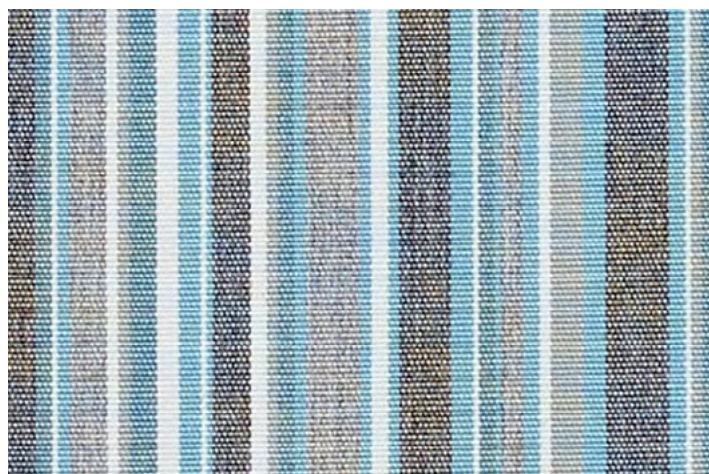


SJA 3936 137
LIME

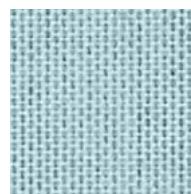


SJA 3957 137
CONFETTI GREEN | REPEAT/RAPPORT: 19,38cm

SUNBRELLA® SOLIDS & STRIPES



SJA 3776 137
PORTO BLUE CHINÉ | REPEAT/RAPPORT: 19,95cm



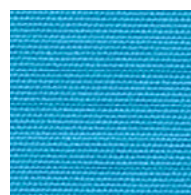
SJA 3964 137
CURAÇAO



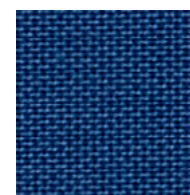
SJA 3940 137
POLAR BLUE



SJA 5420 137
MINERAL BLUE



SJA 3961 137
AZURE



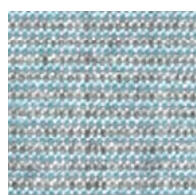
SJA 3717 137
RIVIERA BLUE



SJA 5499 137
TRUE BLUE



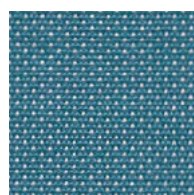
SJA 3973 137
SINTRA BLUE | REPEAT/RAPPORT: 19,80cm



SJA 3793 137
MINERAL BLUE CHINÉ



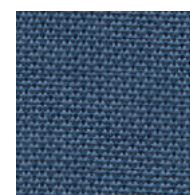
SJA 5416 137
ARUBA



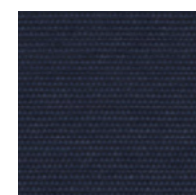
SJA 3941 137
ADRIATIC



SJA 3944 137
CHARRON



SJA 3942 137
BLUE STORM



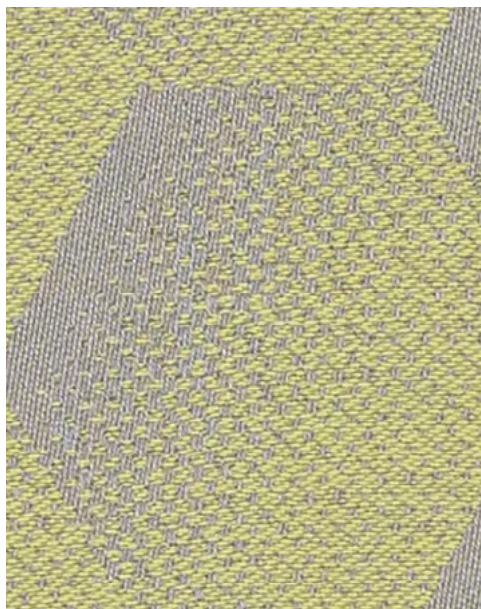
SJA 5439 137
NAVY BLUE



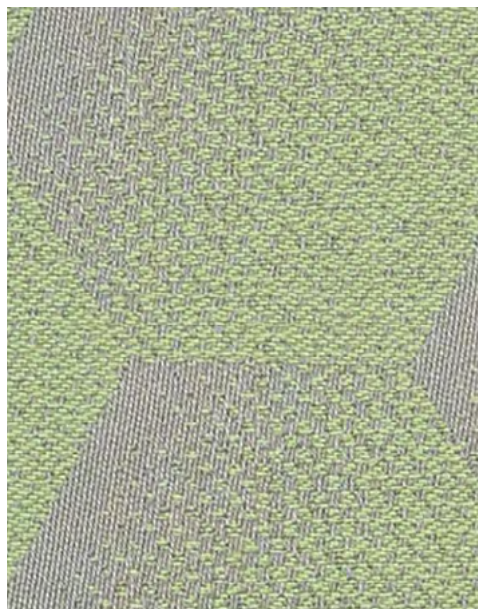
SJA 3972 137
FIGARI PEACOCK | REPEAT/RAPPORT: 27,73cm

SUNBRELLA® HEXAGON

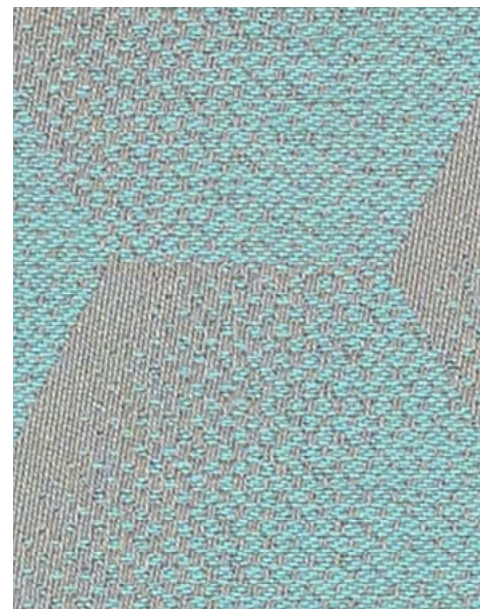
REPEAT / RAPPORT:
50,7 cm ↓ 14,22 cm



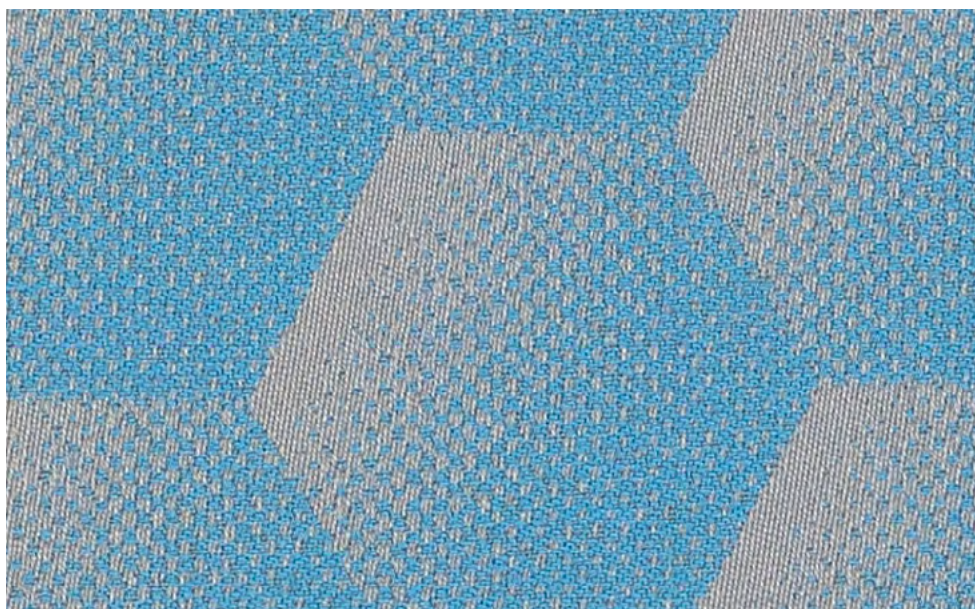
HEX J207 140
LEMON



HEX J206 140
MINT



HEX J205 140
ACQUA



HEX J204 140
AZURE



HEX J203 140
PINK

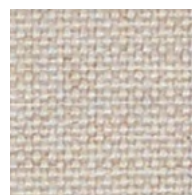
SUNBRELLA® NATTÉ



NAT 10014 140
NATURE



NAT 10021 140
CANVAS



NAT 10151 140
LINEN CHALK



NAT 10150 140
HEATHER CHALK



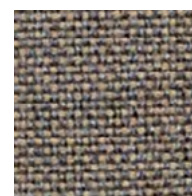
NAT 10155 140
TAUPE CHALK



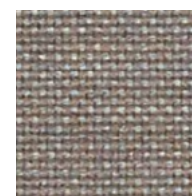
NAT 10028 140
HEATHER BEIGE



NAT 10029 140
HEATHER GREY



NAT 10065 140
CARBON BEIGE



NAT 10040 140
NATURE GREY



NAT 10153 140
FLANELLE CHALK



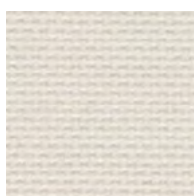
NAT 10063 140
CHARCOAL CHINÉ



NAT 10030 140
SOOTY



NAT 10059 140
DARK TAUPE



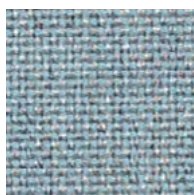
NAT 10020 140
WHITE



NAT 10154 140
STORM CHALK



NAT 10022 140
GREY CHINÉ



NAT 10025 140
FROSTY CHINÉ

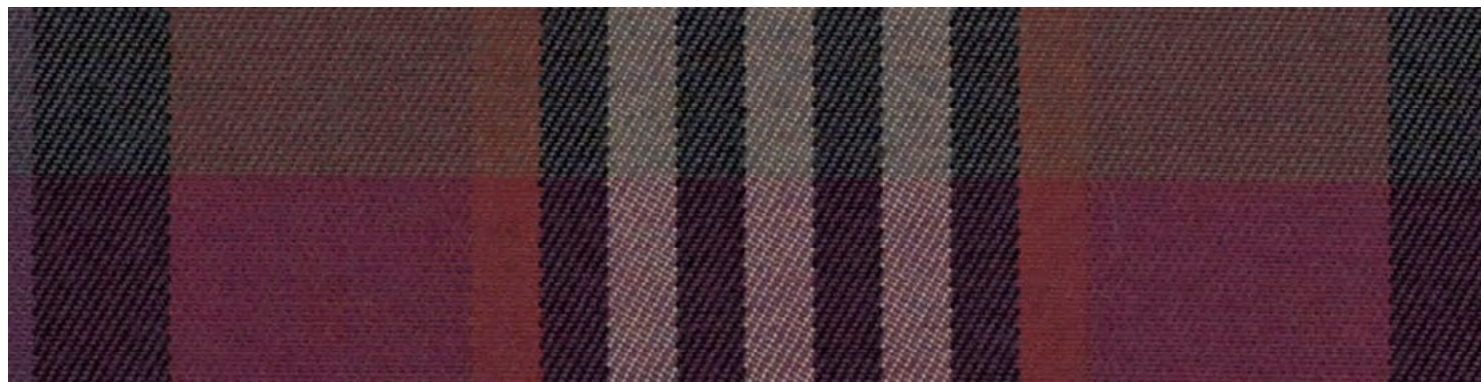


NAT 10064 140
CARBON SKY



NAT 10152 140
GRAUMEL CHALK

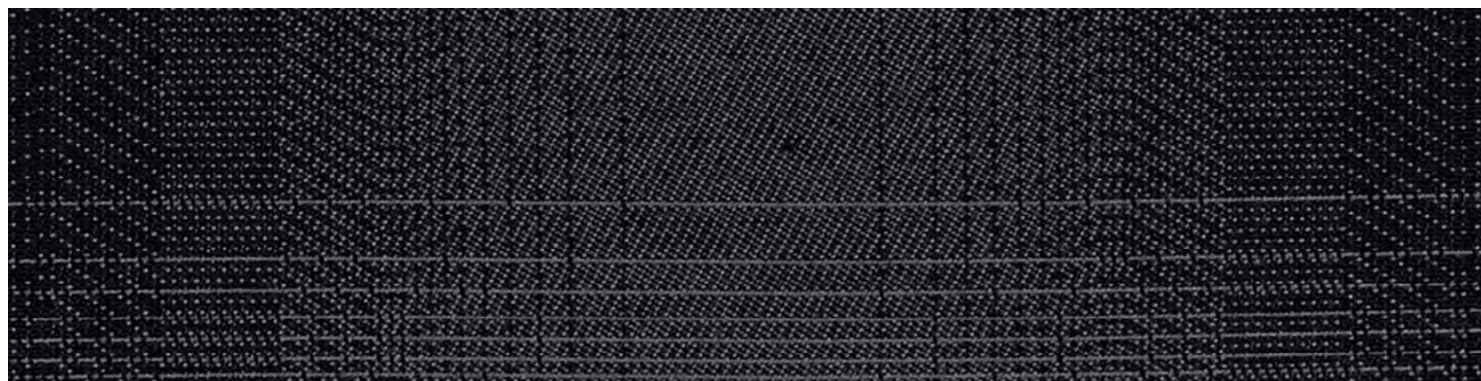
SUNBRELLA® CHECKS



CHE F057 140
EDWARD RED | REPEAT/RAPPORT: $\leftarrow 27\text{ cm} \rightarrow$ $\updownarrow 22\text{ cm}$



CHE F058 140
EDWARD PEACOCK | REPEAT/RAPPORT: $\leftarrow 27\text{ cm} \rightarrow$ $\updownarrow 22\text{ cm}$



CHE F056 140
CONNOR BLACK | REPEAT/RAPPORT: $\leftarrow 27,4\text{ cm} \rightarrow$ $\updownarrow 26,5\text{ cm}$

SUNBRELLA® ROBBEN



ROB R032 140
SILVER



ROB R001 140
SKY



ROB R011 140
OCEAN



ROB R030 140
GREY



ROB R005 140
STORM



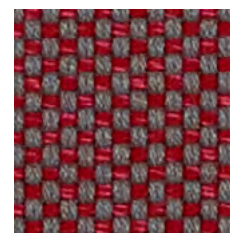
ROB R031 140
ANTIQUE



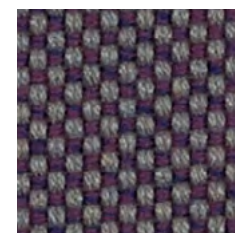
ROB R008 140
HEMP



ROB R009 140
TAUPE



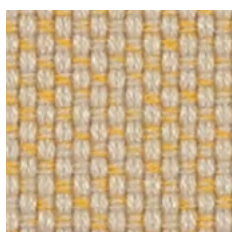
ROB R012 140
DRAMA



ROB R007 140
PLUM



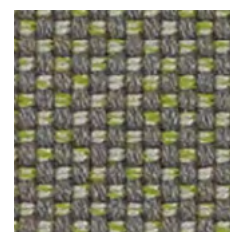
ROB R004 140
STRAW



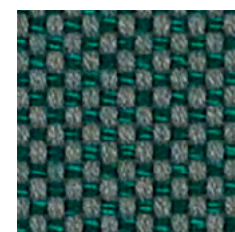
ROB R003 140
WHEAT



ROB R002 140
LICHEN



ROB R006 140
LEAF



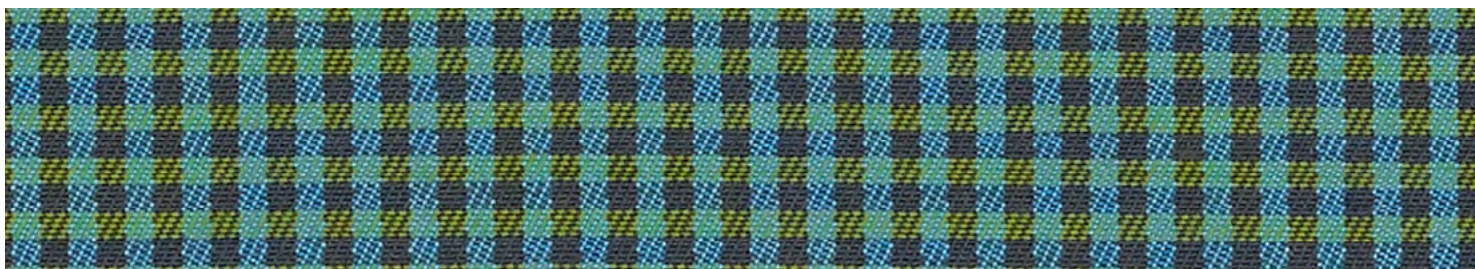
ROB R010 140
FOREST

SUNBRELLA® CHECKS

REPEAT / RAPPORT:
0,80 cm ↔ 0,70 cm



CHE F061 140
OLIVER YELLOW



CHE F059 140
OLIVER GREEN

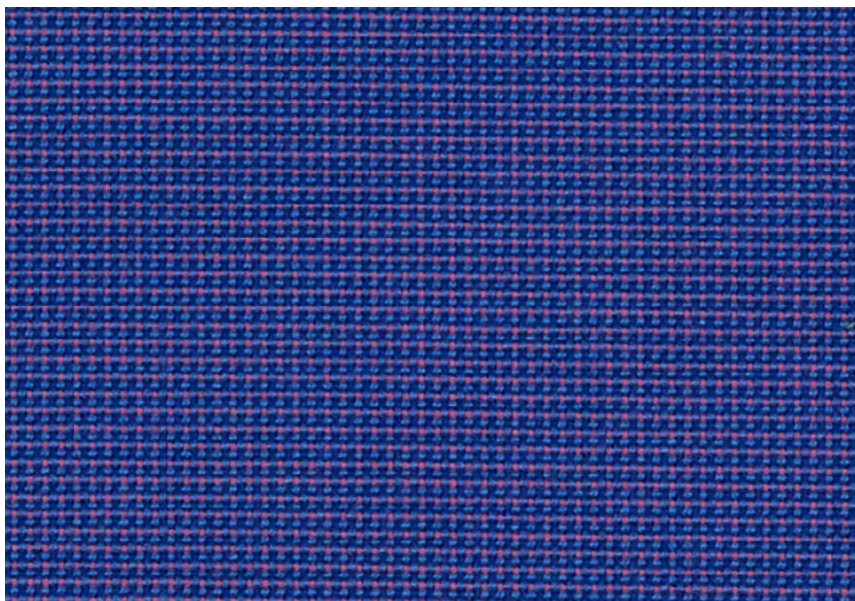


CHE F060 140
OLIVER LILAC

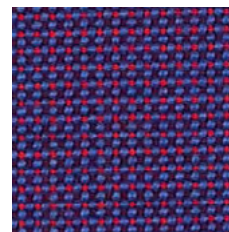


CHE F062 140
OLIVER BLUE

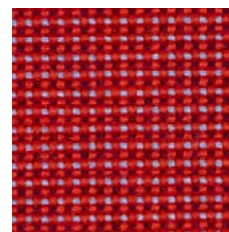
SUNBRELLA® BENGALI



BEN 10162 140
VIOLET



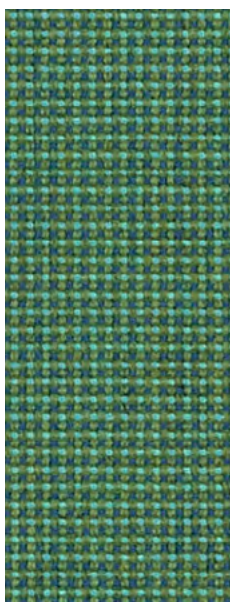
BEN 10161 140
PURPLE



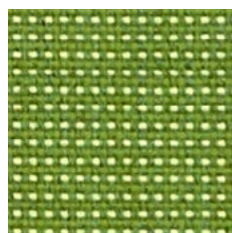
BEN 10158 140
CHERRY



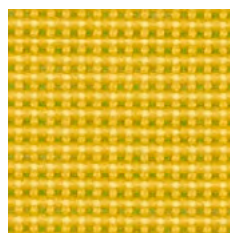
BEN 10159 140
RED



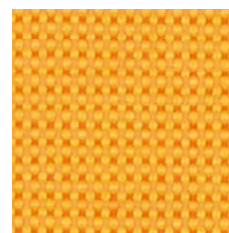
BEN 10168 140
MINT



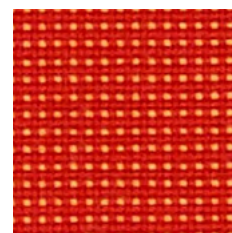
BEN 10167 140
BAMBOO



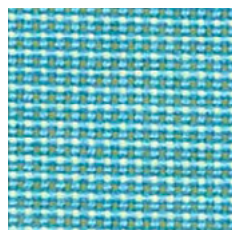
BEN 10156 140
YELLOW



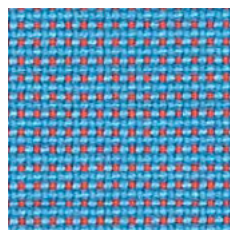
BEN 10157 140
ORANGE



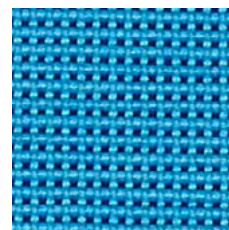
BEN 10160 140
PAPAYA



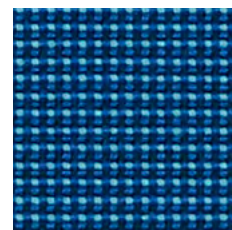
BEN 10164 140
SKY



BEN 10165 140
OPTIC ORANGE



BEN 10166 140
CAPRI



BEN 10163 140
OCEAN

	STANDARDS NORMES	SOLIDS & STRIPES	BENGALI
COMPOSITION			
FINISH FINITION			
MINIMUM USEFULL WIDTH LAIZE UTILE MINI/CM	EN 1773	137	
WEIGHT POIDS	ISO 3801 g/sqm - g/m ²	260	275
ROLL LENGTH LONGUEUR ROULEAU	LM ML		
SPRAY TEST DÉPERLANCE	ISO 4920 Class/5		
COLOUR FASTNESS UV INDOOR SOLIDITÉ COULEURS UV INDOOR	ISO 105B02 Class/8		
COLOUR FASTNESS TO WEATHER OUTDOOR SOLIDITÉ COLORIS INTEMPÉRIES OUTDOOR	ISO 105B04 1000 h Class/5		
COLOUR FASTNESS DRY FRICTION SOLIDITÉ COLORIS FROTTEMENT SEC	ISO 105X12 Class/5		
COLOUR FASTNESS WET FRICTION SOLIDITÉ COLORIS FROTTEMENT HUMIDE	ISO 105X12 Class/5		
CARE INSTRUCTIONS ENTRETIEN			Ironing r

CHECKS
Edward - Connor - Oliver

NATTÉ

HEXAGON

ROBBEN

100 % Sunbrella® Acrylic
100% Acrylique Sunbrella®

Water-Repellent & Stain-Proof
Déperlant & Anti-Taches

140

250

275

310

630

50

25

5

4

8

4-5

5

5



reinforces the treatment - Le repassage renforce le traitement

* Hexagon, Robben : cold washing - lavage à froid



BLEACH
CLEANABLE



BREATHABLE
COMFORT



MOLD/MILDEW
RESISTANT



WATER & STAIN
RESISTANT



SUN
PROTECTION



UV/FADE
RESISTANT



LANDFILL
FREE

ZERO LANDFILL

For over 30 years, Sunbrella® has recycled its industrial wastes such as yarn and packaging. Today, every Sunbrella® manufacturing facility around the globe sends absolutely no waste to the landfill.



SKIN PROTECTION

The Skin Cancer Foundation recommends Sunbrella® fabrics in shading products as an aid in the prevention of sun-induced damage to the skin as a part of a complete sun protection regimen, including regular use of sunscreen.



PRODUCT CERTIFIED FOR
LOW CHEMICAL EMISSIONS
UL COM/CG
UL 2818

GREENGUARD CERTIFIED

Sunbrella® upholstery fabric has achieved GREENGUARD GOLD Certification. Sunbrella® upholstery fabrics are certified by GREENGUARD as contributing to healthy indoor air by being a very low emitting interior product.



Tested for harmful substances.
www.oeko-tex.com/standard100

OEKO-TEX LABEL

A quality that meets human-ecological requirements. Awarded with the OEKO-TEX label (class II – products with direct contact to the skin), Sunbrella® fabrics are made without any identified harmful substance that could be a danger to health, skin and the environment.



LIMITED WARRANTY

FOR DETAILED WARRANTY INFORMATION
VISIT WWW.SUNBRELLA.COM/WARRANTY



NEW DANDY





TROPIC SPIRIT



BLACK ATTITUDE





NEW DANDY





DESIGN + PERFORMANCE™

www.sunbrella.com

EDITION OCTOBER 2017 - SAS DICKSON CONSTANT - CAPITAL 12.640.000 EUROS - 381 347 970 R.C.S. LILLE MÉTROPOLE
CRÉATION : LIKE A FREE - CRÉDIT PHOTO : OLI&CO - SUNBRELLA® IS A REGISTERED TRADEMARK OF GLEN RAVEN, INC.

